

Pig Tiger Reading

Percussion Clef



The **percussion clef** indicates that you are playing percussion instruments without pitches, such as snare drum or drum set.

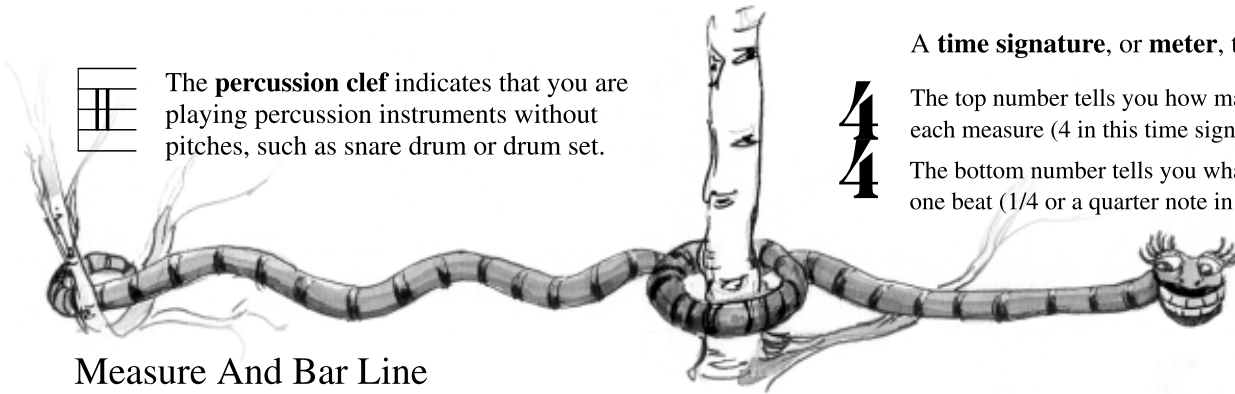
Time Signature or Meter

A **time signature**, or **meter**, tells you two things:

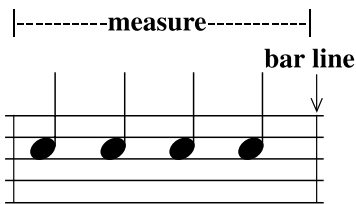


The top number tells you how many beats are in each measure (4 in this time signature).

The bottom number tells you what note value receives one beat (1/4 or a quarter note in this time signature).



Measure And Bar Line



A **measure** contains notes and/or rests that fit the information given in the time signature. Sometimes a measure is called a **bar**.

A **bar line** shows you the end of a measure.

Double Bar

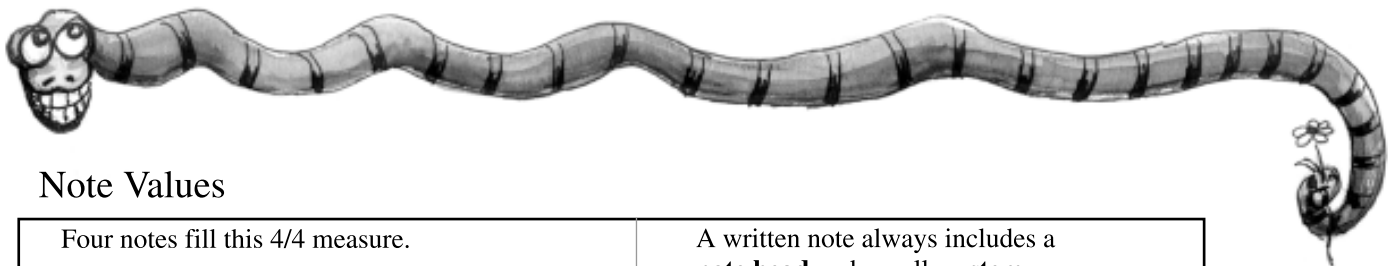


A **double bar** tells you that you have reached the end of the piece.

Repeat Sign

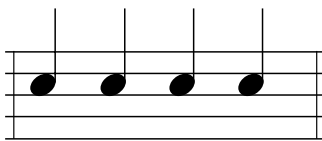


A **repeat sign** tells you to go back to the beginning and play the music again. Always look for repeat signs before you play any piece of music!



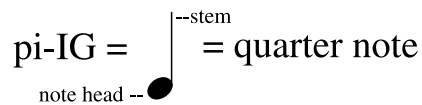
Note Values

Four notes fill this 4/4 measure.



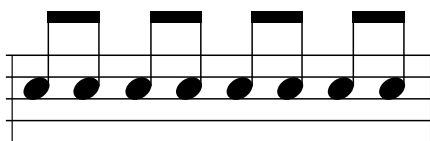
One of these notes is one-fourth, or a quarter, of the measure. It is a **quarter note**.

A written note always includes a **note head** and usually a **stem**.

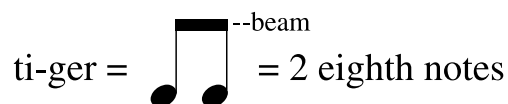


Sing pi-IG to fill each quarter note.

Eight notes fill this 4/4 measure.



One of these notes is one-eighth of the measure. It is an **eighth note**.



Eighth notes are often grouped in pairs by a single beam, as you see here. How many beams do quarter notes have?

Sticking

Sticking is the choice of which stick, right or left, to use on each note of a selection.

In the first few sections of this book, every animal will begin with the right hand (R). In this section, Pi-IG is R. Tiger is RL.

pi-IG ti-ger pi-IG pi-IG

R R L R R



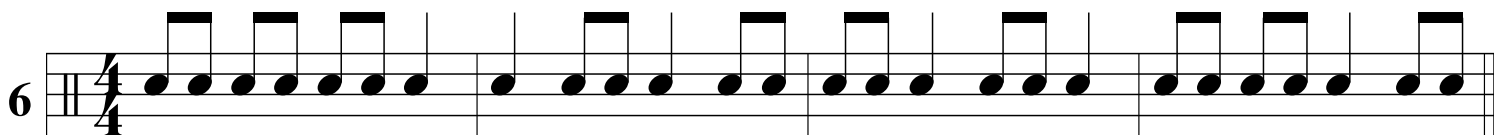
1

2

3

4

5



Composition

A **composer** is a person who creates (composes) music.

A **composition** is a musical creation, such as "Caterpillar Tiger" on page 11.

- **Compose** your own four-measure snare drum solo in 4/4 meter that uses Pi-IG's (quarter notes) and Ti-ger's (eighth notes).
- Be sure to include a percussion clef, a meter signature, and bar lines, just as you see in exercises 1-7.
- Will your solo have a repeat sign or a double bar at the end?
- Play your solo when you've finished writing it!



Title _____

Composer _____

